

AERIAL PHOTOGRAPH OF THE DEVELOPMENT

發展項目的鳥瞰照片



● Location of the Development
發展項目的位置

Extracted from the aerial photo taken by the Survey and Mapping Office of the Lands Department at a flying height of 6,000 feet, photo No. E070880C, dated 3rd Oct 2019.

摘錄自地政總署測繪處於2019年10月3日在6,000呎飛行高度拍攝之鳥瞰照片，編號為E070880C。

Survey and Mapping Office, Lands Department, The Government of HKSAR © Copyright reserved
- reproduction by permission only.

香港特別行政區政府地政總署測繪處 © 版權所有，未經許可，不得複製。

Note :

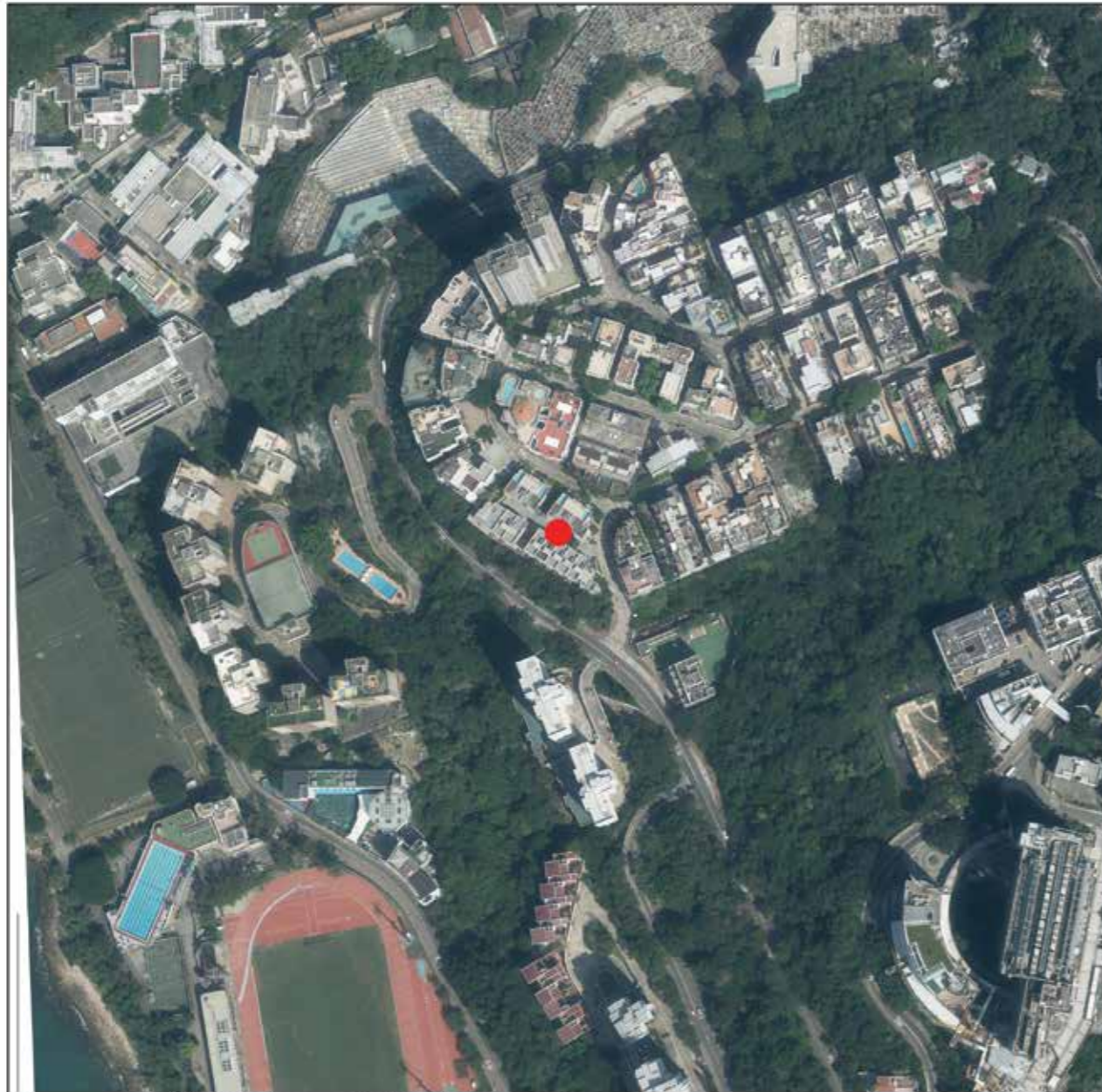
1. The aerial photograph is available for free inspection during normal office hours at the sales office.
2. Due to technical reasons (such as the irregular shape of the Development), the aerial photograph shows more than the area required under the Residential Properties (First-hand Sales) Ordinance.
3. The vendor advises prospective purchasers to conduct an on-site visit for a better understanding of the Development site, its surrounding environment and the public facilities nearby.

備註：

1. 該鳥瞰照片存於售樓處，於正常辦公時間內供免費查閱。
2. 因技術原因（例如發展項目之不規則形狀），鳥瞰照片所顯示之範圍多於《一手住宅物業銷售條例》所要求。
3. 賣方亦建議準買家到有關發展地盤實地考察，以對該發展地盤，其周邊地區環境及附近的公共設施有較佳了解。

AERIAL PHOTOGRAPH OF THE DEVELOPMENT

發展項目的鳥瞰照片



These blank areas fall outside the coverage of the relevant Aerial Photograph
鳥瞰照片並不覆蓋本空白範圍

● Location of the Development
發展項目的位置

Extracted from the aerial photo taken by the Survey and Mapping Office of the Lands Department at a flying height of 6,000 feet, photo No. E070881C, dated 3rd Oct 2019.
摘錄自地政總署測繪處於2019年10月3日在6,000呎飛行高度拍攝之鳥瞰照片，編號為E070881C。

Survey and Mapping Office, Lands Department, The Government of HKSAR © Copyright reserved
- reproduction by permission only.
香港特別行政區政府地政總署測繪處 © 版權所有，未經許可，不得複製。

Note :

1. The aerial photograph is available for free inspection during normal office hours at the sales office.
2. Due to technical reasons (such as the irregular shape of the Development), the aerial photograph shows more than the area required under the Residential Properties (First-hand Sales) Ordinance.
3. The vendor advises prospective purchasers to conduct an on-site visit for a better understanding of the Development site, its surrounding environment and the public facilities nearby.

備註：

1. 該鳥瞰照片存於售樓處，於正常辦公時間內供免費查閱。
2. 因技術原因（例如發展項目之不規則形狀），鳥瞰照片所顯示之範圍多於《一手住宅物業銷售條例》所要求。
3. 賣方亦建議準買家到有關發展地盤實地考察，以對該發展地盤，其周邊地區環境及附近的公共設施有較佳了解。